

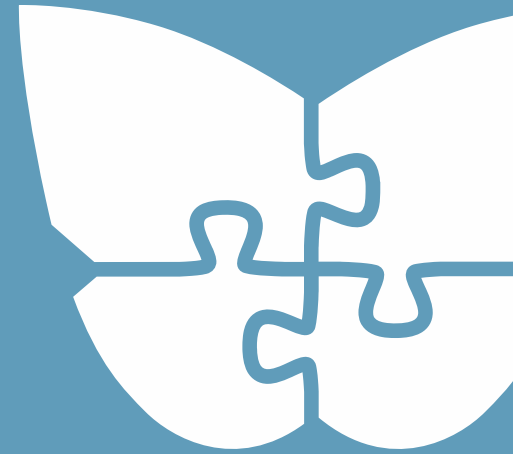
**Ecosystems are  
Infrastructure:**

**Watershed  
Investment from the  
Water Utilities**

**Carrie Sanneman**



**WILLAMETTE PARTNERSHIP**



**LAYING THE GROUNDWORK FOR MORE  
EFFECTIVE CONSERVATION.**

# Willamette Partnership

Nature is our original infrastructure

- Improved water quality
- Habitat for native species
- Resilient natural systems
- Resilient communities

Utility investments can be transformative



WILLAMETTE  
PARTNERSHIP

# Water utilities

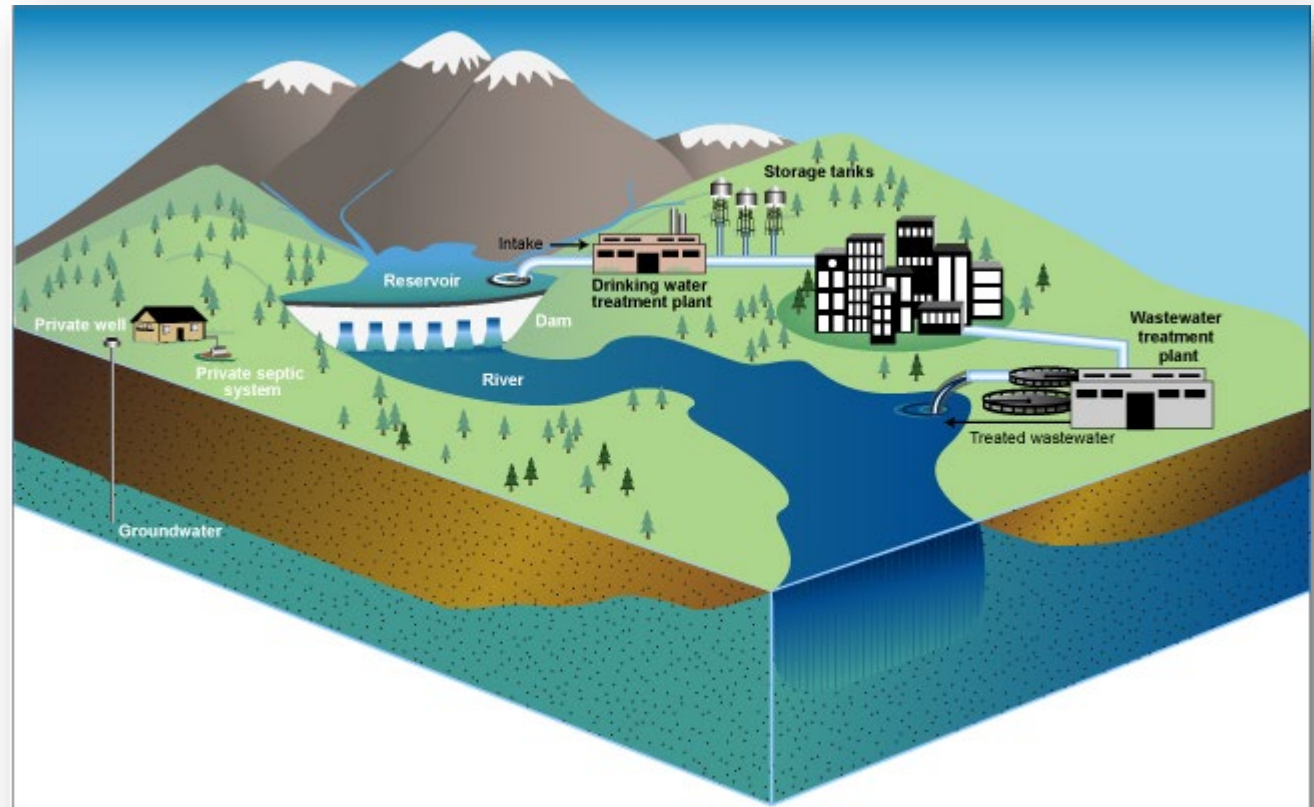
Organizations (governmental, private, or some combination) that maintain a water system, and provide some combination of services:

- drinking water supply
- sewage treatment and wastewater management
- stormwater management



# Water Utility Services

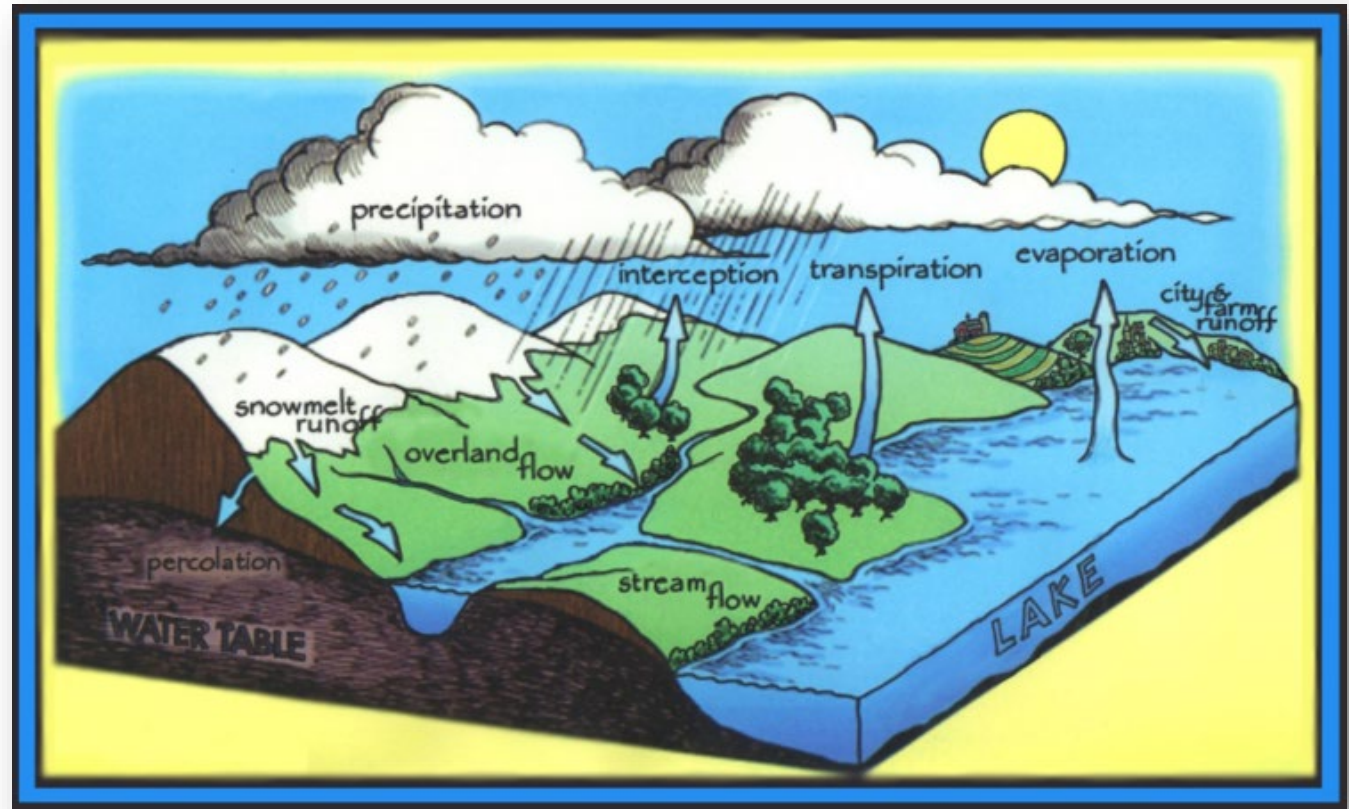
- Store
- Transport
- Treat



Sources: GAO and EPA | GAO-17-559

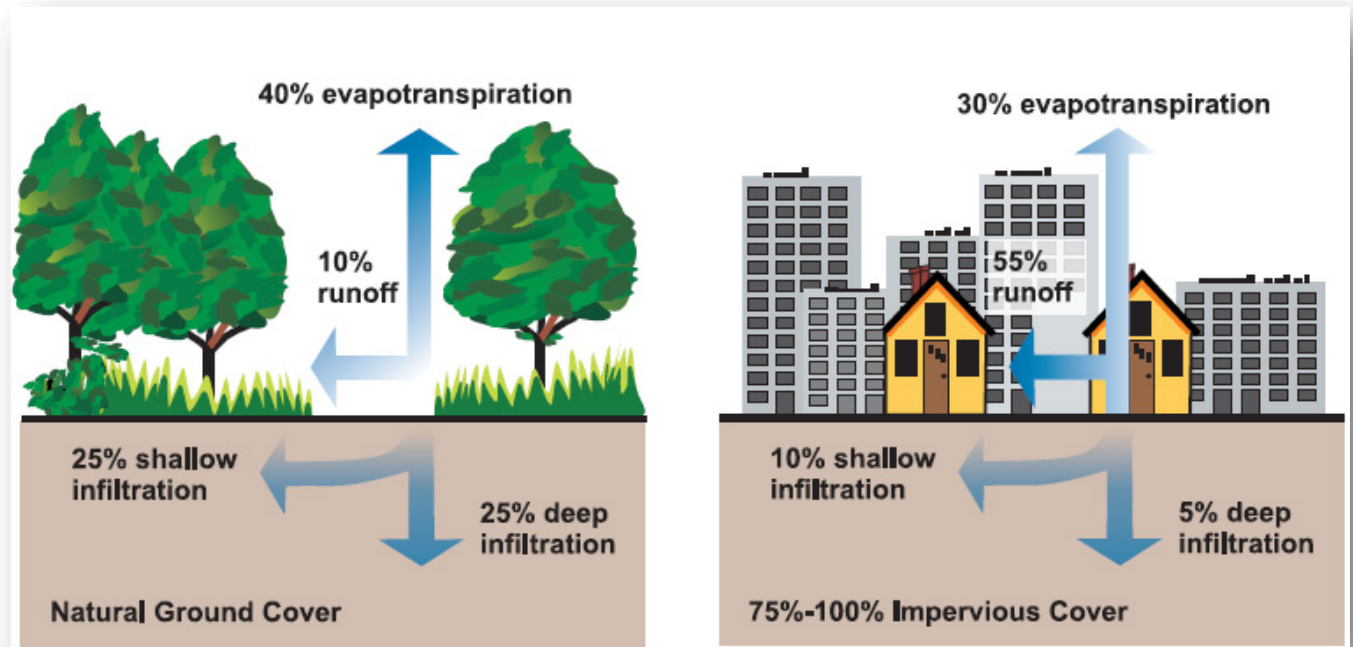
# Watershed Services

- Store
- Transport
- Treat

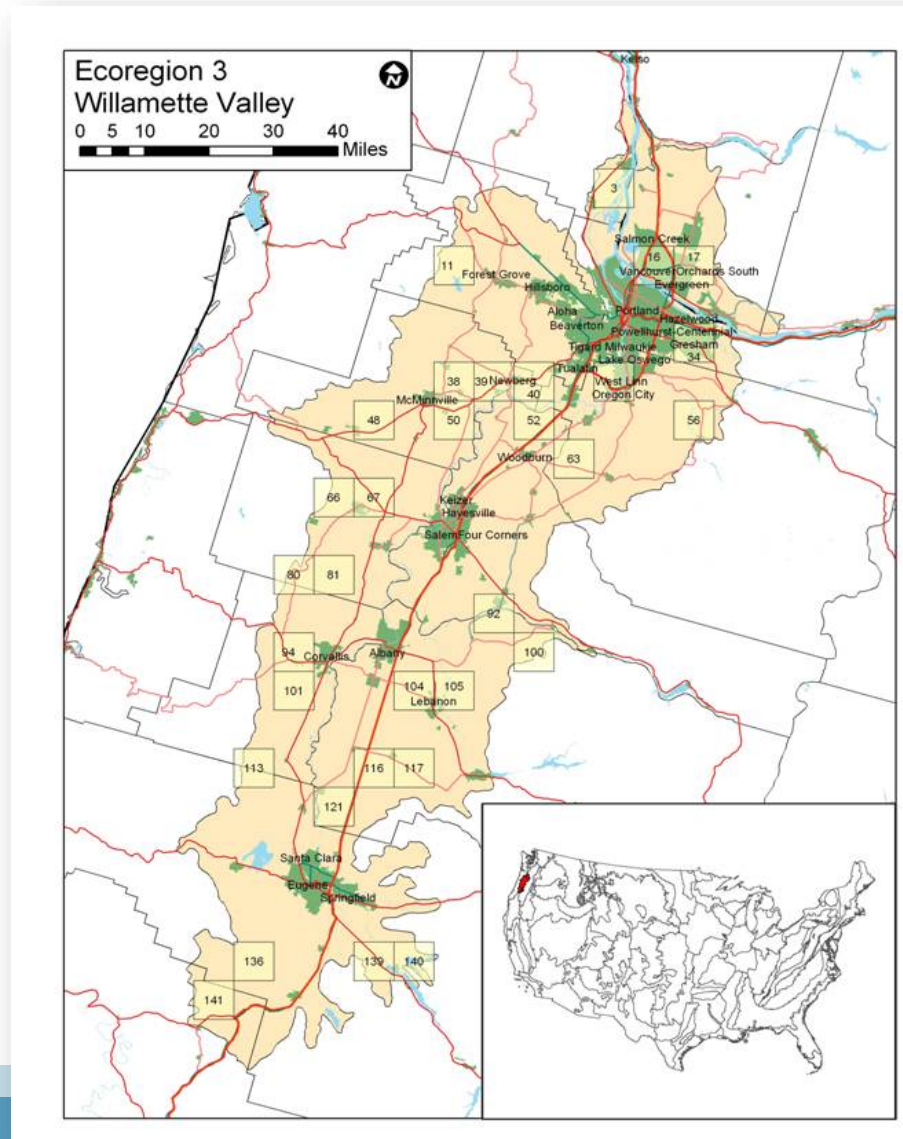


# Stormwater

- Store
- Transport
- Treat



# Water Services: Who Benefits, Who Pays





I need:

- predictable and affordable treatment costs,
  - New ways to meet stringent nutrient requirements,
  - Strategies to deal with aging infrastructure
- Oh...and they need to fit in my permit, get board approval, and not raise rates.

How about all the ecosystem services out there?

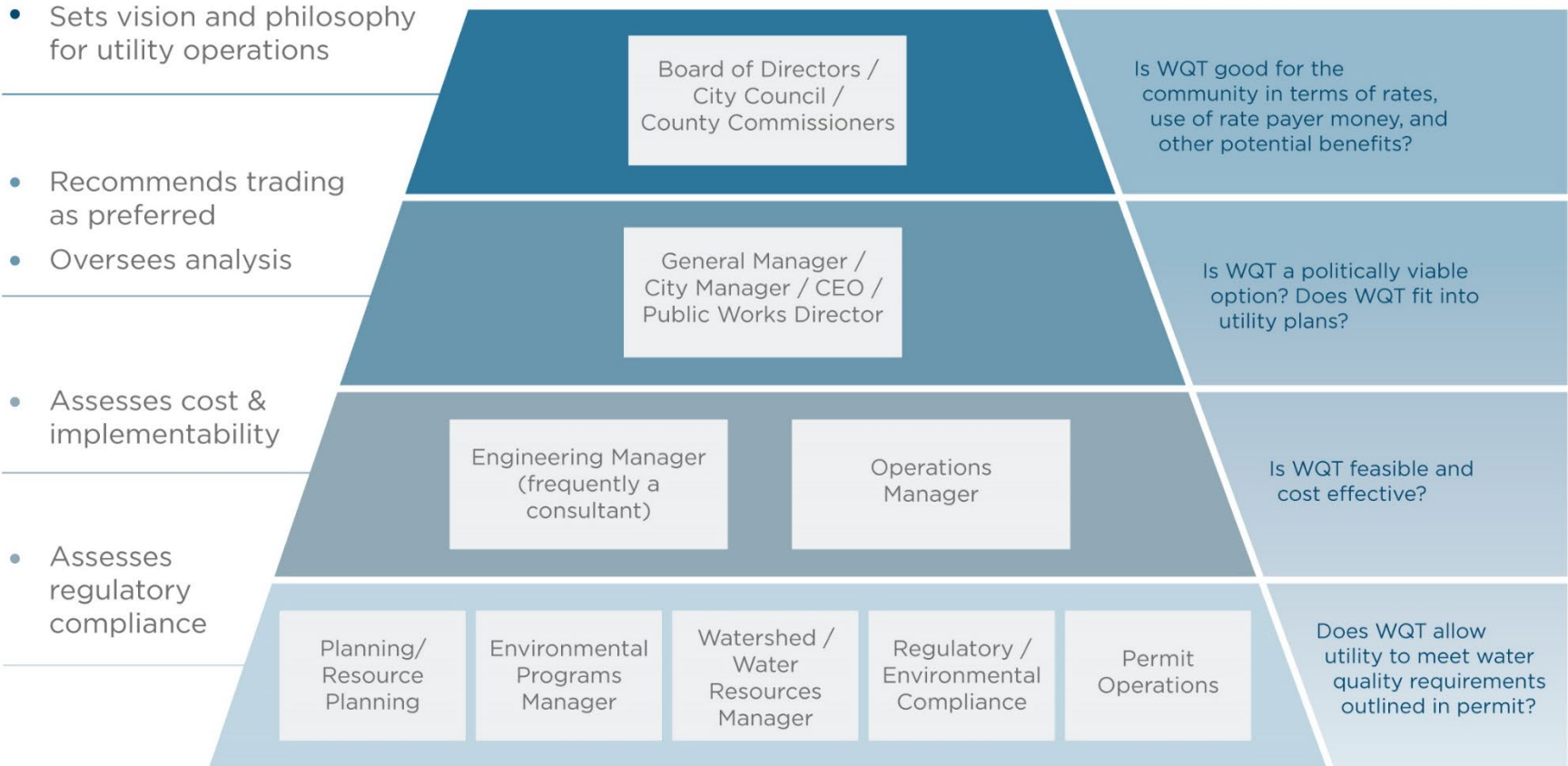
No thank you. Our service is water storage, delivery, and treatment



# Decision Making Structure at Large Clean Water Utility

## DUTIES

## QUESTIONS



# NPDES PERMIT PROCESS

## LEGEND



assumed barrier



opportunity to insert trading into the conversation

## 01

Utility submits application for NPDES permit/ permit renewal to State or other permitting authority

## 02

State drafts permit

## 03

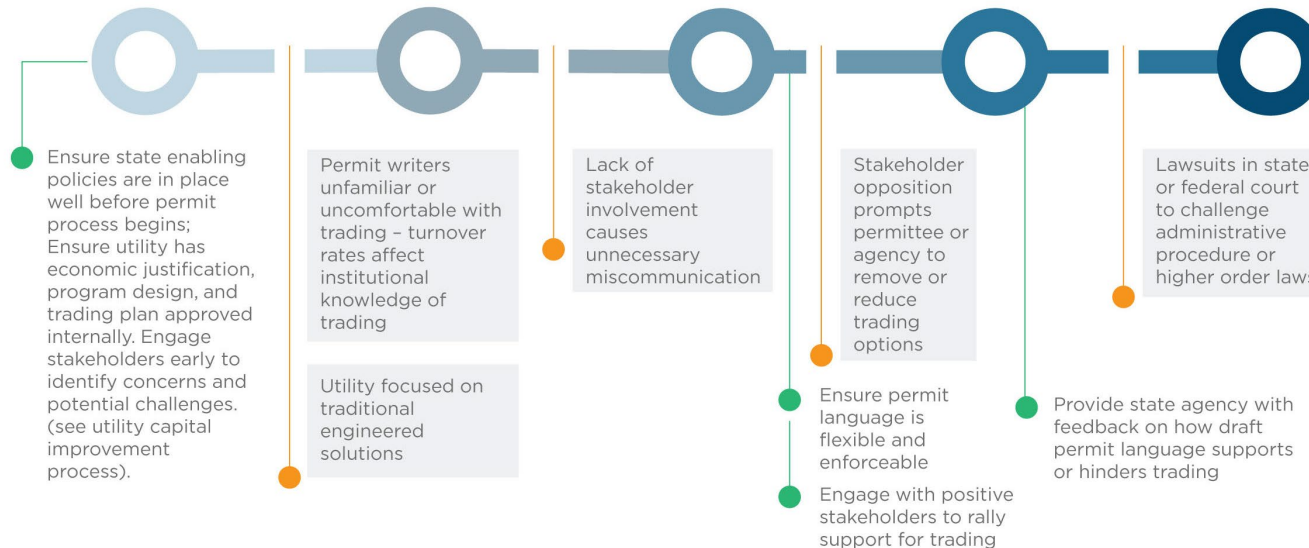
State issues public notice of draft permit

## 04

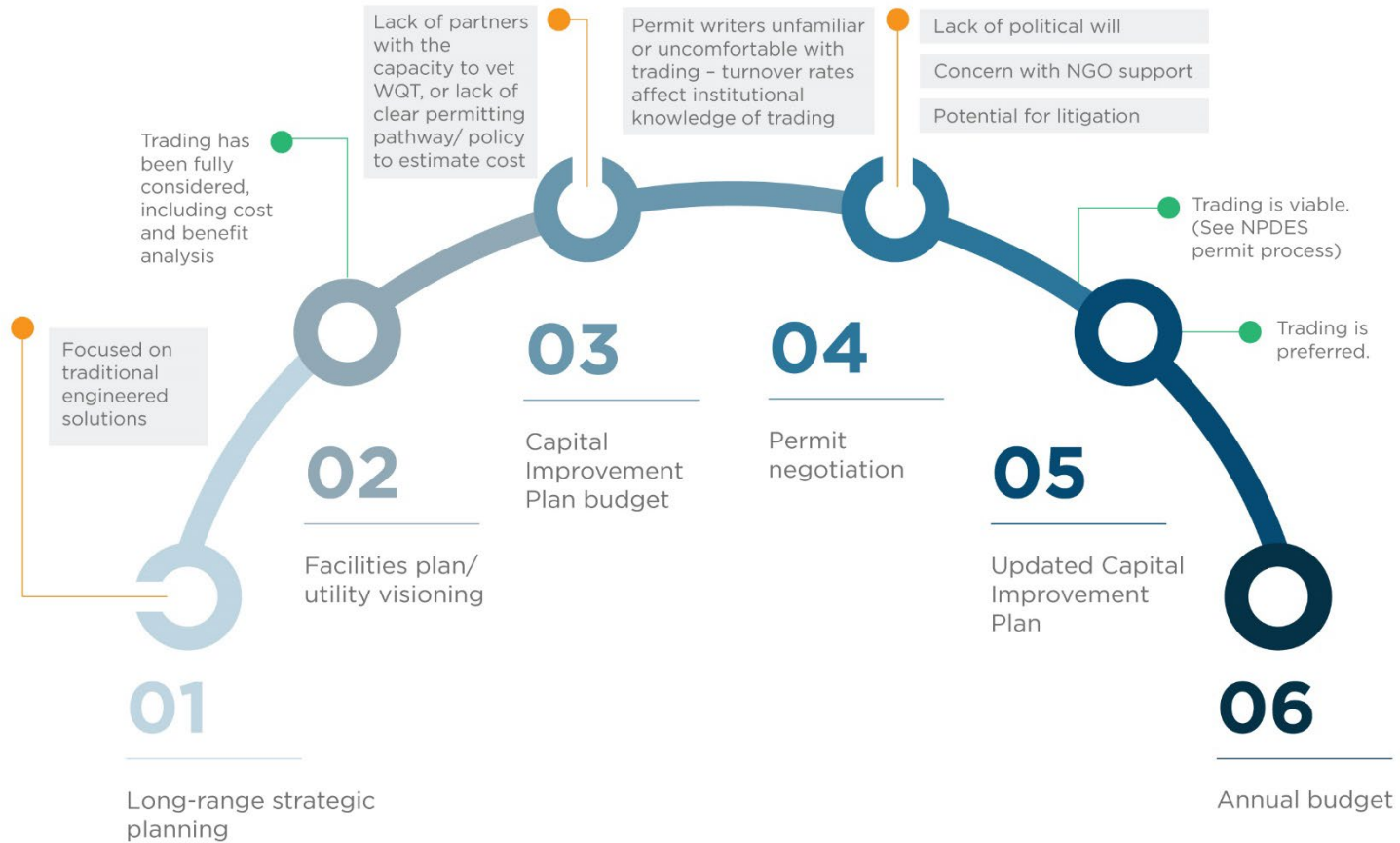
State responds to comments, revises permit if necessary

## 05

State issues permit

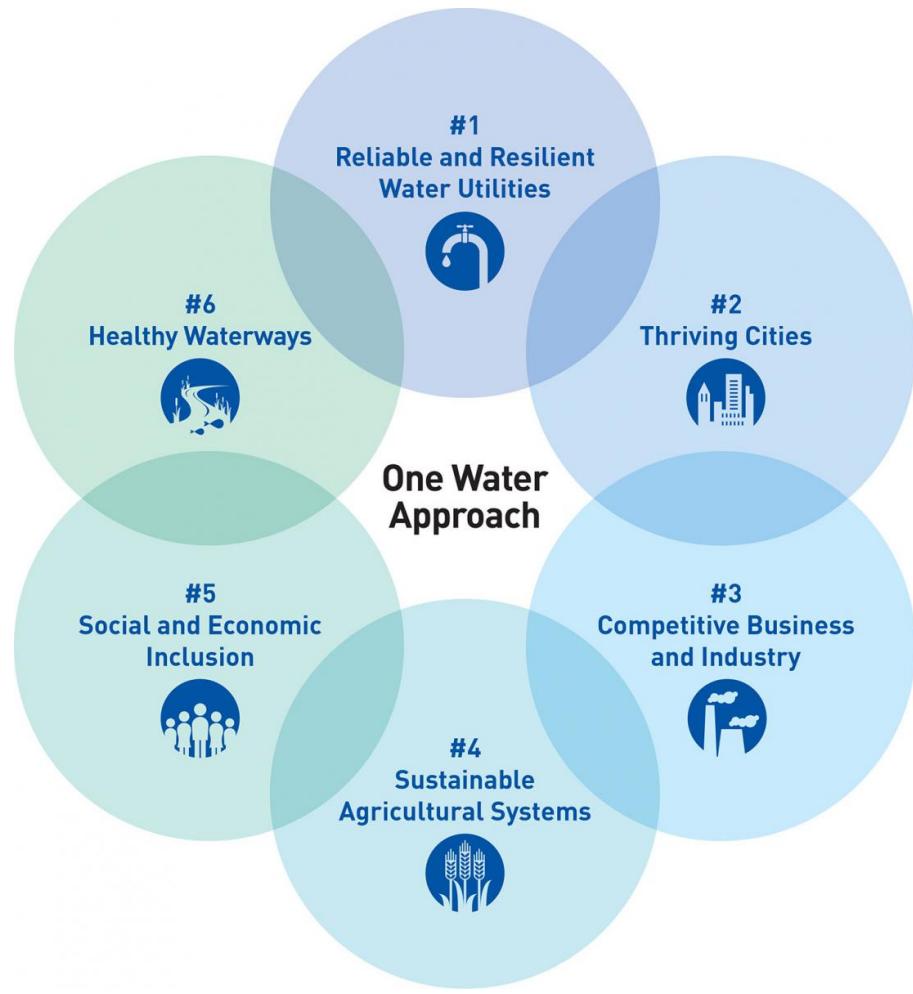


# UTILITY CAPITAL IMPROVEMENT PROCESS





# US Water Alliance



## Hallmarks of One Water

- A mindset that all water has value
- Focus on achieving multiple benefits
- A systems approach
- Watershed-scale thinking and action
- Right-sized solutions
- Partnerships for progress
- Inclusion and engagement for all





In that case, maybe you need:

- Ag-municipal partnerships or watershed management can:
  - $\uparrow$  surface water quality =  $\downarrow$  treatment costs
  - $\uparrow$  infiltration =  $\uparrow$  long term reliability of groundwater supplies
- Water quality trading to  $\downarrow$  costs of permit compliance
- Distributed treatment to  $\downarrow$  infra costs or extend the lifespan of my current system
- An opportunity to be known as the utility of the future or a One Water champion?
- Asset management

No thank you. Our service is water storage, delivery, and treatment

# McKenzie Watershed Conservation Fund

Carrie Sanneman

Kristiana Teige Witherill



# McKenzie Watershed Conservation Fund

## ***Eugene Water and Electric Board***

*Cascade Pacific Resource Conservation &  
Development*

*Lane Council of Governments*

*McKenzie River Trust*

*McKenzie Watershed Council*

*Oregon State University*

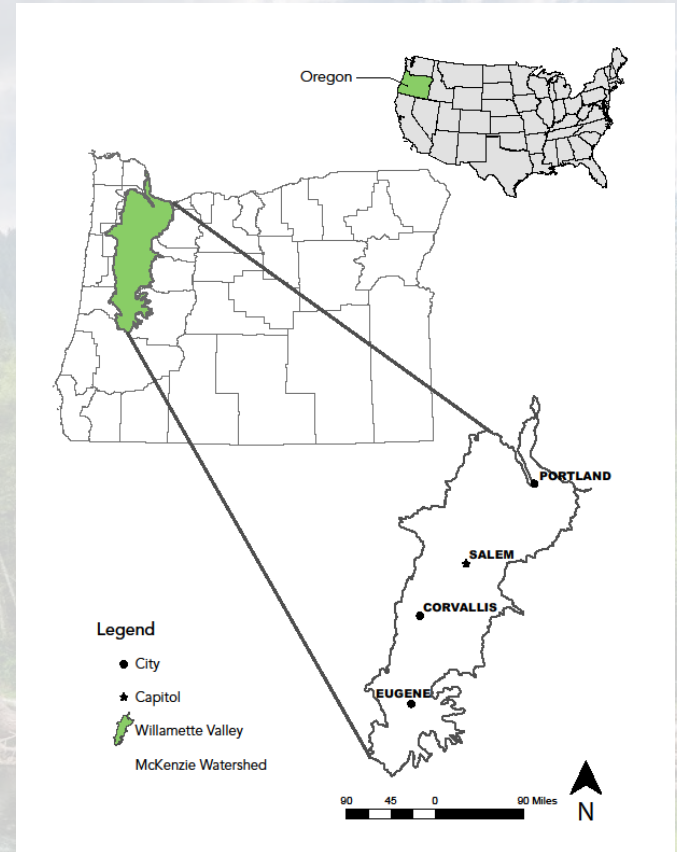
*The Freshwater Trust*

*University of Oregon*

*Upper Willamette Soil & Water Conservation  
District*

*Willamette National Forest, McKenzie Ranger  
District*

***Metropolitan Wastewater Management  
Commission***

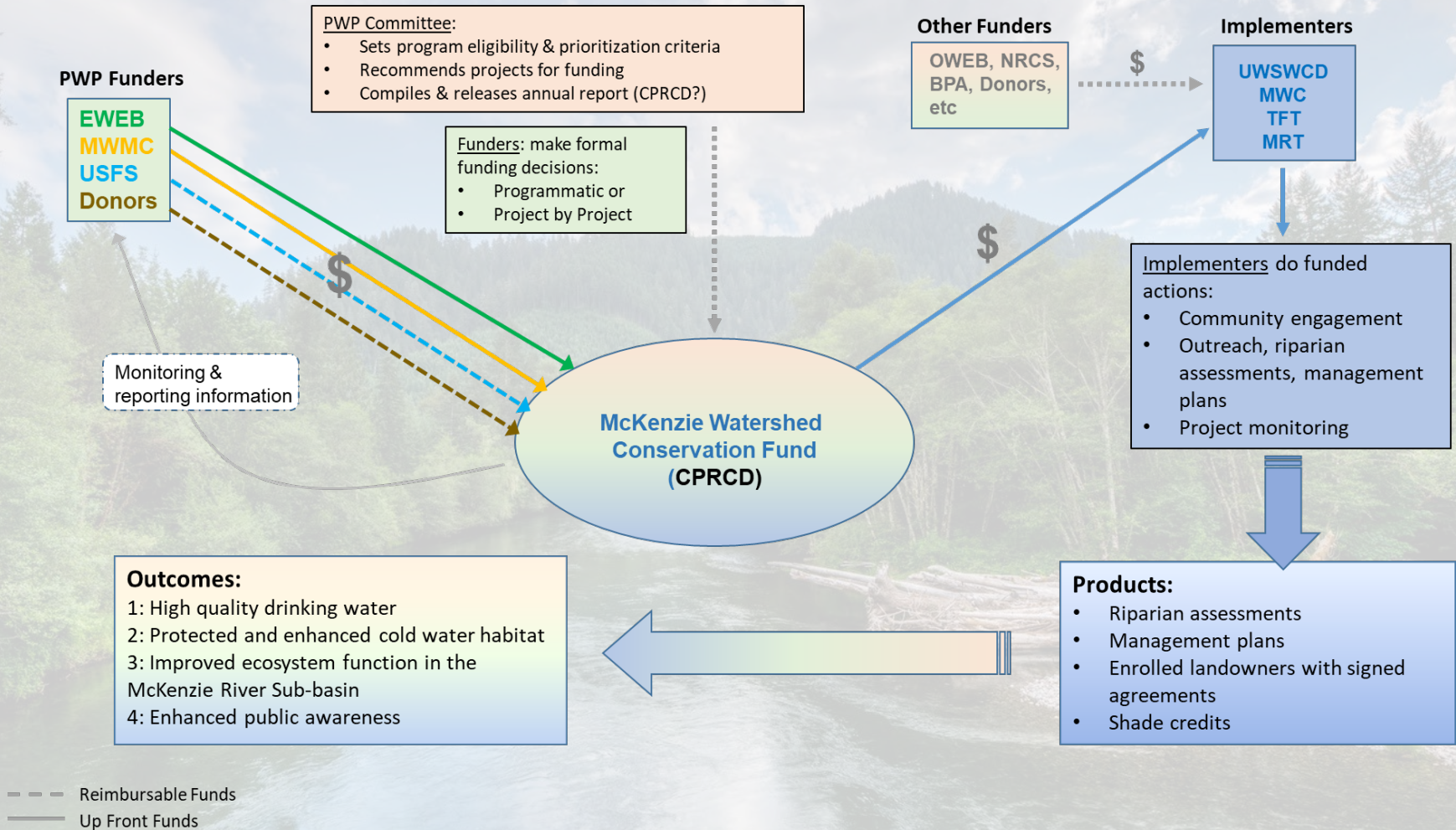




# McKenzie Watershed Conservation Fund

*The Pure Water Partners are a collection of agencies, organizations and businesses that are working together to protect and restore water quality in the McKenzie River Watershed and maintain clean, healthy drinking water for the more than 200,000 people in our region.*

# McKenzie Watershed Conservation Fund



# Willamette Water Temperature

A restoration alternative for point source compliance, an opportunity for collective investment and meaningful impact.



**WILLAMETTE PARTNERSHIP**

**Thank you**

**Carrie Sanneman**

[Sanneman@willamettepartnership.org](mailto:Sanneman@willamettepartnership.org)



**WILLAMETTE PARTNERSHIP**

4640 SW Macadam Ave., Suite 50, Portland, OR 97239 | T: 503.946.8350 | F: 971.229.1968 | W: [www.willamettepartnership.org](http://www.willamettepartnership.org)